

# **Coagulation analyzer OCG-102**

## **Service manual**

**Guangzhou Wondfo Biotech Co., Ltd.  
International Marketing Department**

# Common problem solving and maintenance manual

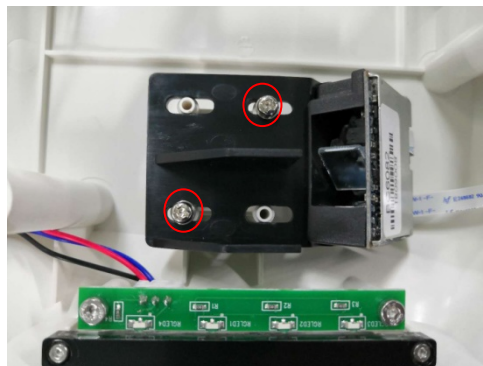
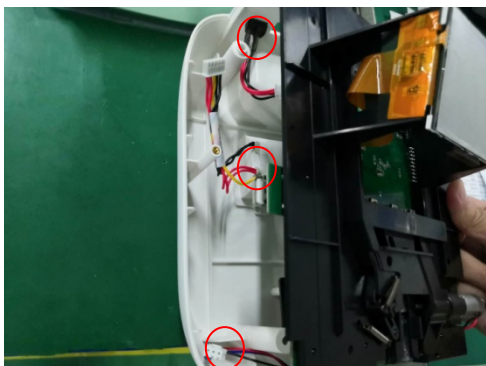
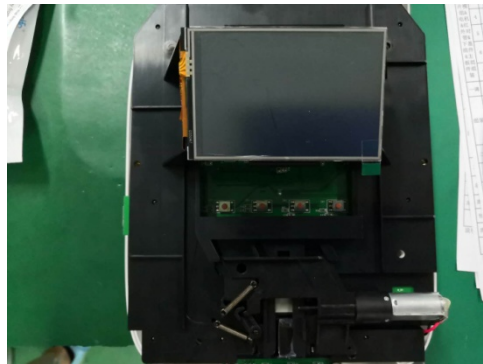
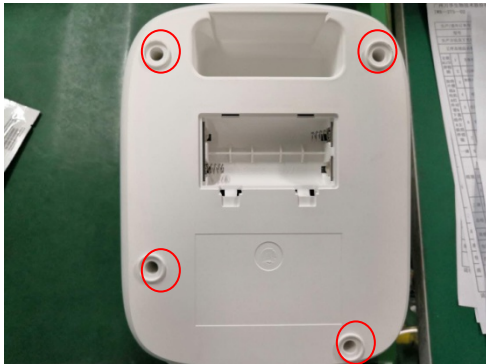
## 1. Abnormal barcode reading

1.1. Tip “The scan code is invalid. Please enter barcode”. If it still not read the barcode after inserting the cartridge in place, operate as follows:

- a) Check if the barcode is damaged or crooked  
If crooked: tear off the barcode and paste straight and test

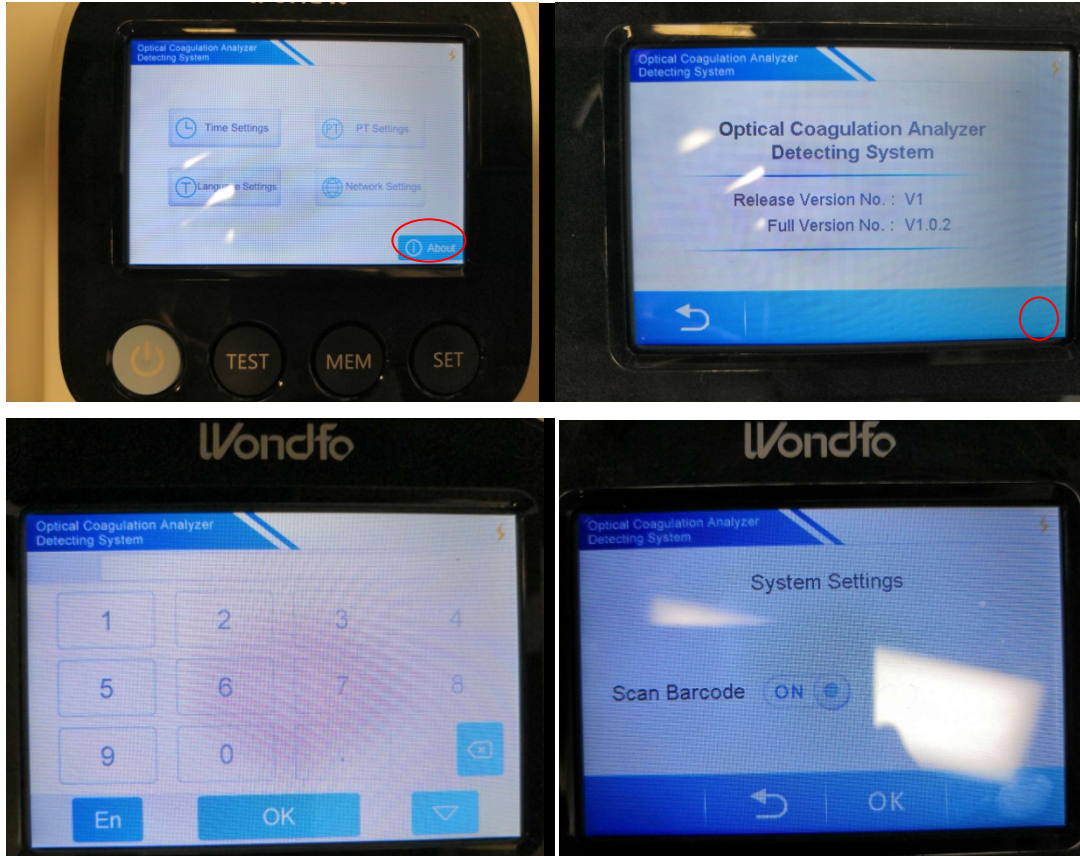


- b) Check the barcode installation position  
If the position of red light is too left or too right, the screws of up and bottom covers need to be discharged. Then unscrew the test module locked with the bottom cover, pull out the lines connecting bottom cover with main board. Loosen the screws of supporting arm, adjust the supporting arm to the left or right and make the red light scan to the middle of cartridge barcode.



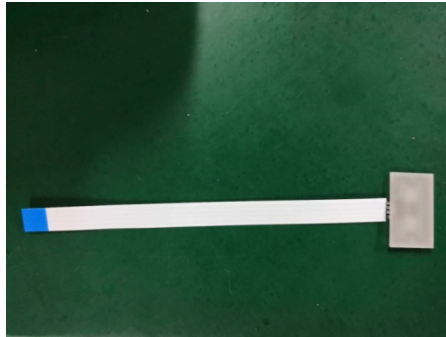
- c) Still cannot scan when the barcode and installation position is correct.  
Use the cellphone to scan the barcode and input the number into the machine to test.

- d) Turn off barcode scanning function: Press "SET" button, click "About" on the bottom right corner, then click the bottom right corner for 6 times, input password "666666", and then turn off the "Scan Barcode" function and click "OK" to save.



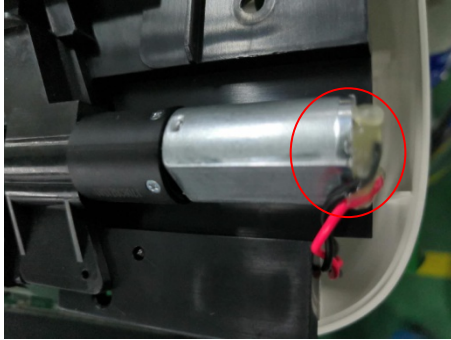
## 2. Abnormal heating

- 2.1. The heater band not work. Check if the line and heater band welding part is disconnected. If disconnected, ceramic heater band need replacing by professionals

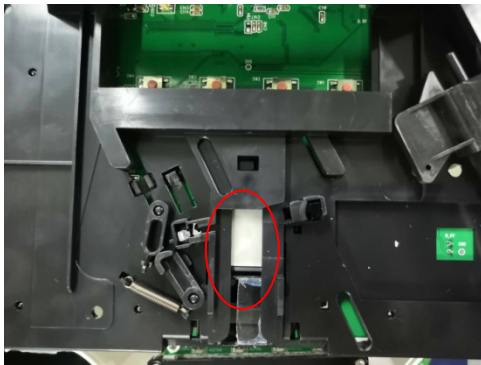


### 3. Abnormal sample adding

3.1. Sample adding reaction is slow. Check if the gear is rotating reverse. If reverse, it means the power line is welded reverse, replace the motor connecting lines.



3.2. Check if there is dirty on heater band, which can influence the sample adding signal. Use the alcohol to clean

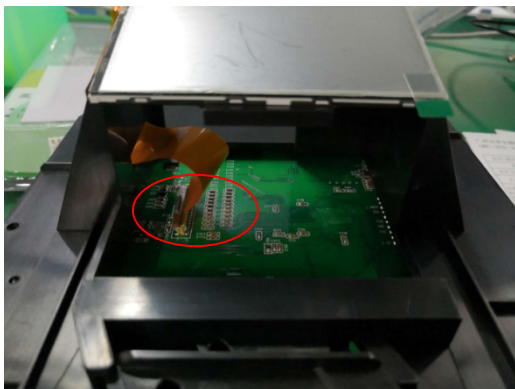


### 4. Motor not rotate

4.1. The power line of motor disconnected. Reweld and use the glue to fix.

### 5. There is light on screen but no word shown

5.1. The screen connecting line is not inserted well. Unscrew the up and bottom covers, insert the line well and fasten the screws.



## **6. Not good CV**

- 6.1. Check the test signal. Confirm if it is the axle sleeve causing unstable rotating speed. Replace the axle sleeve.

## **7. No time memory**

- 7.1. no battery;
- 7.2. battery has no power;
- 7.3. battery clamp loose or faulty soldering;
- 7.4. IC of time control is broken;
- 7.5. clock crystal oscillator problem;
- 7.6. other circuit problem
- 7.7. module problem

## **8. Abnormal ID chip data transmission**

- 8.1. cannot read ID chip
  - 1) ID chip problem
  - 2) circuit and line problem
  - 3) Empty ID chip
  - 4) ID chip is not corresponding to the right edition ID Maker software, leading to mismatching
- 8.2. ID chip not inserted easily

ID chip board installation position is not correct, not parallel to ID chip slot of bottom cover. Readjust and install.

## **9. Unable to connect bluetooth**

- 9.1. bluetooth unable to connect
  - 1) The bluetooth not turned on in machine: turn Bluetooth on in setting
  - 2) The bluetooth connected is not this machine. The bluetooth name of Coagulation analyzer are all XXX OCG-102. Check the bluetooth name of this machine in setting and connect.
  - 3) The bluetooth module damaged: the professional analyze and replace the main board.

## **10. Unable to connect WIFI**

- 10.1. WIFI unable to connect
  - 1) Inputting wrong password make it unable to connect
  - 2) Searching WIFI is slow when connecting WIFI. It takes a while to search the nearby WIFI.
  - 3) WIFI module Damage: the professional analyze and replace the main board.