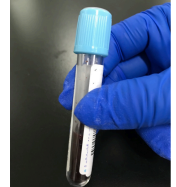
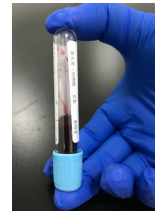
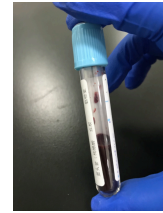


## Blood coagulation test——sample adding and notes ( citrate venous whole blood )

- 1 † Use sodium citrate anticoagulant tube (blue cap) for venous blood collection. The sample & anticoagulant ratio should be 9:1. Collect the blood exactly at the volume mark line, and then gently inverted and mixed.



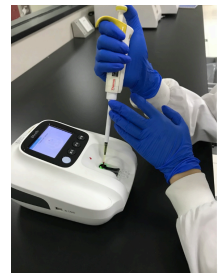
- 2 † Gently invert and mix the blood well before testing. Do not use clotting or hemolysis blood sample.



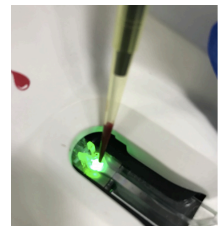
- 3 † Steadily pipette 20  $\mu$ l of whole blood into the sample well (green light) at once.



- 4 † To avoid the pipette shaking when adding sample, the arms can be supported on the desk. Using one hand, and the forefinger of the other hand to hold the pipette firmly.



- 5 † The tip should slightly touch the inner edge of sample adding well, avoid touching the rotating rotor.



- 6 † To avoid bubbles, the pipette should tilt slightly. And pipette to the first stop when extruding the blood.



- 7 † To avoid sample backflow, keep pressing the pipette at the first stop, uplift it and then release.